



Electrical Information			
Model No.	SP02-600	SP02-1K2	SP02-1K8
Power Consumption(±5%)	600W	1200W	1800W
Power Supply	Inventronics/uPowerTek/Upshine		
Input Voltage	220-277VAC, 50/60 Hz	200-277VAC, 50/60 Hz	200-420VAC, 50 / 60 Hz
Power Factor	>0.92	>0.92	>0.95
Surge Protection	10kV line-line/20kV line-earth		
Driver Type	Constant Current (CC)		
Control	DALI, DMX		

Optic Information			
LED Type 1	LED 3737		
Luminous Flux (±10%)	78000lm	156000lm	234000lm
Efficacy(5700K Ra70)	130lm/W		
Beam Angle	F22001, F22003, F22004		
LED Type 2	LED 5050		
Luminous Flux (±10%)	90000lm	180000lm	270000lm
Efficacy(5700K Ra70)	150lm/W		
Beam Angle	F22001-01		
Correlated Color Temperature	5700K (3000K, 4000K optional)		
Color Rendering Index	Ra70 (Ra80, Ra90 optional)		
UGR Level	NA		

Description

SP02 is an innovative multi-functional sports light, which is suitable for outdoor sports arena and indoor gymnasiums. It conforms to the modern aesthetic in outlook. Thanks to its unique structural and optic design, it can achieve max asymmetric beam 65°, minimize the backlight, upward light and spill light.

Key Features

- Modular design, available in 600W 1200W 1800W.
- Professional and precise optic design guarantees high quality pollution free lighting performance.
- Visor is available to minimize light pollution.
- With the scale axis, easy for accurate installation.
- Remote power supply, easier for installation and maintenance.
- Electrophoresis + powder coating surface treatment, better in anti-corrosion performance.
- 20kV surge protection.

Applications

- Outdoor sports fields
- Square
- Stadium
- Exhibition center
- Soccer field
- Airport
- Railway station

Dimensions and Mount

Product Dimension	600x563x182mm	905x641x275mm	1242x709x301mm
Luminaire Net Weight(±0.3kg)	Lamp body: 8.8kg Driver box: 5.0kg	Lamp body: 21.0kg Driver box: 8.0kg	Lamp body: 36.7kg Driver box: 6.0kg
Lamp outer box Power supply box	665x445x155mm 560x152x76mm	850x740x220mm 560x152x76mm	1175x725x220mm 510x158x107mm
Gross Weight(±0.3kg)	Lamp body: 9.7kg Driver box: 5.6kg	Lamp body: 24.0kg Driver box: 8.8kg	Lamp body: 42.5kg Driver box: 6.6kg
Mounting Option	Bracket mounting		
Material	Aluminum alloy Polycarbonate optical lens		
Finish	Electrophoresis + powder coating		
Fixture Color	Black (RAL9017)		
EPA	0.27m²/2.90ft²	0.47m²/5.05ft²	0.67m²/7.21ft²
IK Rating	IK08		
IP Rating	IP66		

Lifespan and Warranty

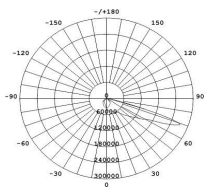
Operating Temperature	-30°C to +45°C
Life Time of LED @Ta=25°C	88000hrs-L80
	140000hrs-L70
Warranty	3 years

New Features

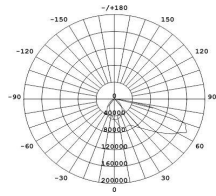
With self-developed power supply, the lamps can be used more intelligently, with single or multiple outputs, and the dimming function can be switched at will (DALI,DMX)

* Please consult us for details.

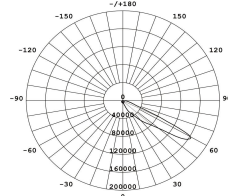
Photometry



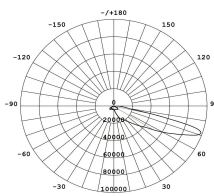
F22001



F22001-01



F22003



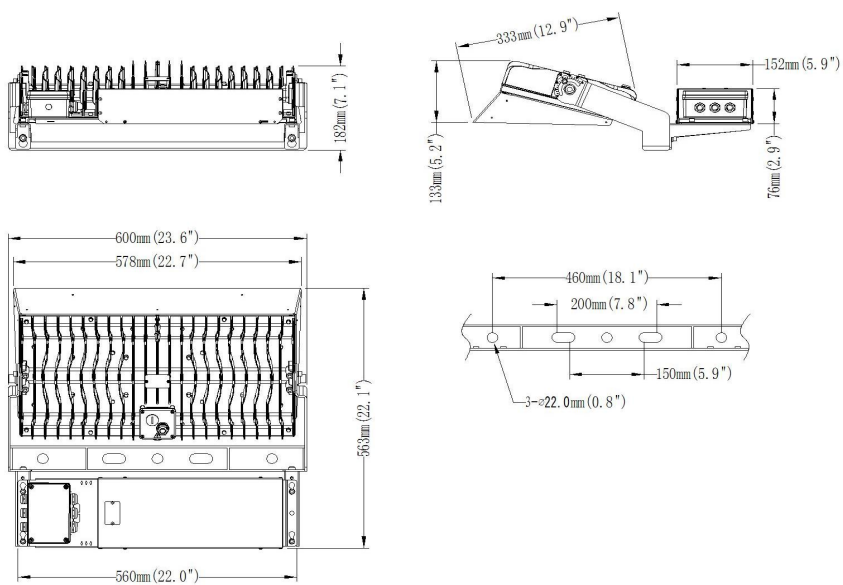
F22004

Mounting Options

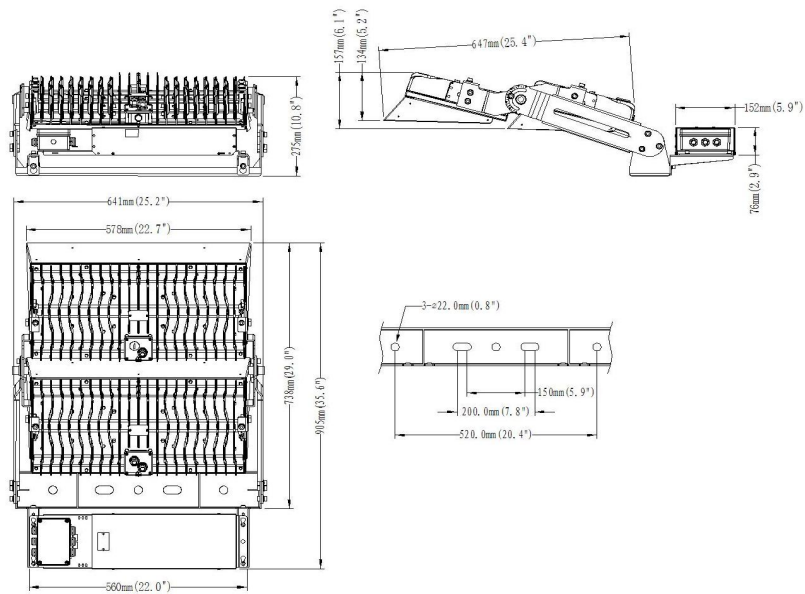


Bracket mounting

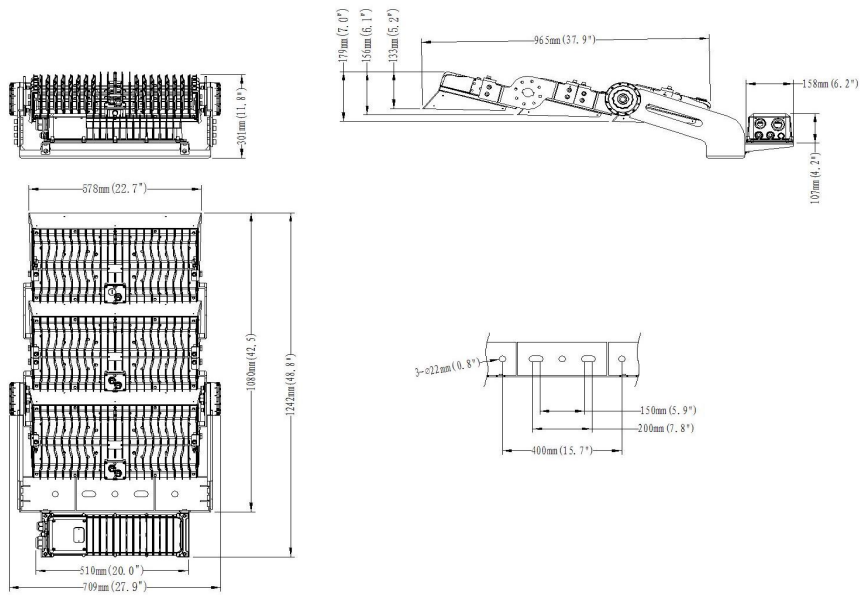
Dimensions



600W

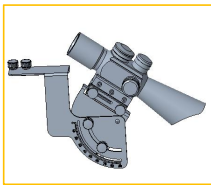


1K2W

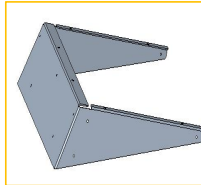


1K8W

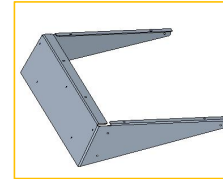
Accessories



Precision Aiming Device
 Accurate adjustment of luminaire projected position.
Code: BC-S02-03



Visor
 H160 for F22002, F22003.
Code: BC-S02-02



Visor
 H80 for F22001, F22004, F22005.
Code: BC-S02-01

Global Axis Co., LLC
 Add: P.O.Box 1604, P.C.130, Azaiba, Muscat, Oman
 Phone: +968 - 24597462 /Website: www.gaxisintl.com