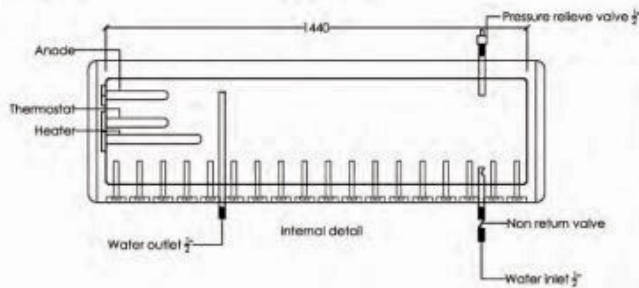
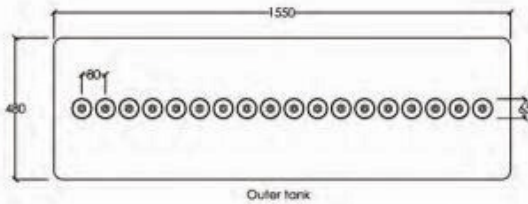


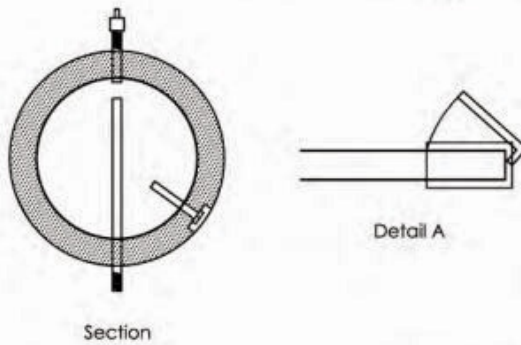
SOLAR WATER HEATER



Integrated Pressure Type



The inner tank adopts the 1.2 mm imported SUS304 stainless steel and automatic welding technology which decrease the corrosion. Intel and outlet use the argon welding technology against the 0.6 Mpa pressure. Heat tube conduct the heat energy in the single direction and has some advantages of the quick operation, high heat efficiency and anti-corrosion.



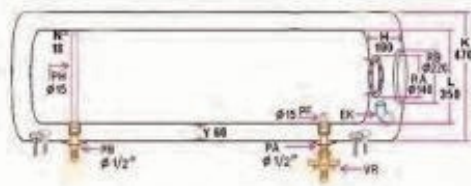
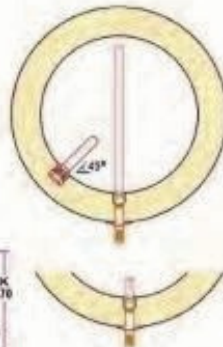
It has advantages of no water in tube, no filthy, no broken tube, anti-freeze, unlimited time of the inputting water and pressure operation.

Insulation adopts the polyurethane which has good insulation efficiency.

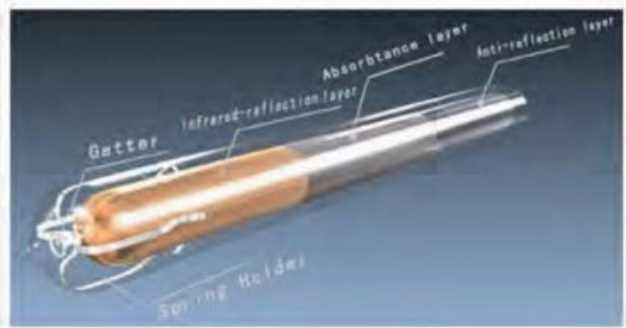
The frame adopts the imported stainless steel, which is strong and against the corrosion.

Tail stock has a novel design and is available to be installed.

Sunpower Solar



Model	product Size (mm) (L×W×H)	Capacity (L)	Qty. per 20' / 40' Container	
SPP-470-H47/1500-12-C	1060×1500×1464	100	60	125
SPP-470-H47/1500-18-C	1480×1500×1464	150	41	85
SPP-470-H47/1500-24-C	1900×1500×1464	200	32	66
SPP-470-H58/1800-12-C	1170×1735×1600	100	60	125
SPP-470-H58/1800-18-C	1650×1735×1600	150	41	85
SPP-470-H58/1800-24-C	2130×1735×1600	200	32	66
SPP-470-H70/1700-10-C	1190×1535×1448	100	60	120
SPP-470-H70/1700-15-C	1690×1535×1448	150	48	96
SPP-470-H70/1700-20-C	2190×1535×1448	200	34	68

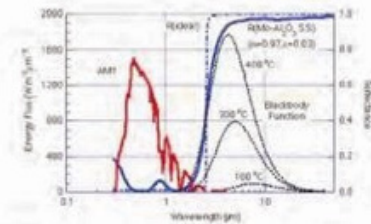


SC Tube Features:

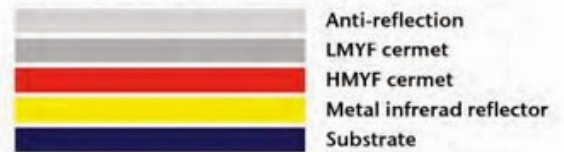
- High solar-thermal conversion and low heat loss
- Stable advanced coating up to 380°C
- Long time warranty to 15 years
- High level vacuum ensure operation under cold weather

Advanced solar selective coatings

Advanced solar selective coatings employ two patent technologies :
 (1) double cermet film structure with the highest photothermal efficiency
 (2) metal-Aluminum nitride cermet (M-AIN) materials deposited by a novel sputtering technology.
 The typical film structure of M-AIN cermet selective surfaces



Schematically shown in the figure one



Data sheet and specification

Models	Φ47×150	Φ58×180	Φ58×200	Φ58×210
Weight	1.35±0.12kg	2.29±0.18kg	2.45±0.20kg	2.67±0.22kg
Structure	All glass coaxial double-layer tubes	All glass coaxial double-layer tubes	All glass coaxial double-layer tubes	All glass coaxial double-layer tubes
Outer tube diameter	Φ47±0.7mm	Φ58±0.7mm	Φ58±0.7mm	Φ58±0.7mm
Inner tube diameter	Φ37±0.7mm	Φ47±0.7mm	Φ47±0.7mm	Φ47±0.7mm
Outer Tube thickness	1.6±0.15mm	1.8±0.15mm	1.8±0.15mm	1.8±0.15mm
Inner tube thickness	1.6±0.15mm	1.6±0.15mm	1.6±0.15mm	1.6±0.15mm
Tubes length	1542±4mm	1812±4mm	2000±4mm	2100±4mm
Material of coating	AIN/AIN-SS/Cu	AIN/AIN-SS/CU	AIN/AIN-SS/CU	AIN/AIN-SS/CU
Absorptance	0.94-0.96	0.94-0.96	0.94-0.96	0.94-0.96
Emittance	0.04-0.06	0.04-0.06	0.04-0.06	0.04-0.06
Vacuum	P≤5×10-3pa	P≤5×10-3pa	P≤5×10-3pa	P≤5×10-3pa
Transmittance of Outer Tube	0.91	0.91	0.91	0.91
Stagnation temperature (height)	270-300°C	270-300	270-300	270-300
Heat-loss coefficient	≤0.6w/ m2*°C)	≤0.6 w/ (m2*°C)	≤0.6 w/ (m2*°C)	≤0.6 w/ (m2*°C)
Bearing hailstone ability	hailstone diameterΦ25mm	hailstone diameterΦ25mm	hailstone diameterΦ25mm	hailstone diameterΦ25mm
Pressure-endure ability	1MPa	1MPa	1MPa	1MPa

Tube install



SP Element



Assistant tank 165/210

Stainless steel inner and outer tank ,polyurethane foam, like toilet float valve, make up water automatically and stop making up if the tank is full



Electric heating, L shape, install at the bottom of the tank

1500W,2500W,3000W,with CE mark, L shape,47mm



Electric heating, 1 shape, install at the side of the tank

1500W,2500W,3000W,with CE mark, 1 shape, can be 3/4 inch or 1 inch



Magnesium anode, protect inner tank from corrosion

Anodized magnesium bar, to attach the dirt in the tank



Automatic make up valve

Same function as assistant tank, used in the area water quality not good, and have stable pressure



TMC water temperature and level display

Temperature, level display



Controller SR 618

Temperature difference on/off;collector emergency cut-off;frost protection;auto function

SPA Element



Pump station

Including Wilo RS15/6 pump station,SPC-2 controller, water flow meter, water pressure meter, expansion tank, safety valve



Controller SR 868

Time and temperature display, temperature difference controlled circulation, hot water timing circulation or heating at three preset time sections, frost protection, memory protection when power is failure, trouble indication of sensor



Wilo circulation pump

RS15/6 wilo pump, pipe connection 15mm, lift 6meter



29/12 wilo pump, pipe connection 29mm, lift 13meter



Expansion tank
8L



Copper connection 1/2'\3/4'
All kinds of connection



Roof mounting kits



Temperature and pressure relief valve



Insulation pipe (single)



Safety valve



Thermostat valve



Check valve 1/2", 3/4"



Clear water pump



Include Wilo RS15/6 pump station, SP868 controller, water flow meter, water pressure meter, expansion tank, safety valve



Soft connection 3/4'



Pressure relief valve



Include Wilo RS15/6 pump station, SP618 controller, water flow meter, water pressure meter, expansion tank, safety valve



Roof mounting kits



Roof bolt



Roof mounting kits



Twinpipe, 1/2", 3/4"



Flexible pipe 1/2", 3/4"



Heat exchanger



Special heat transfer fluid for thermal solar system equipped with evacuated tube collector, ready-to-use Frost protection -28°C