
LED EXPLOSION PROOF LIGHT

Explosion proof grade : Ex d IICT 6 Gb _

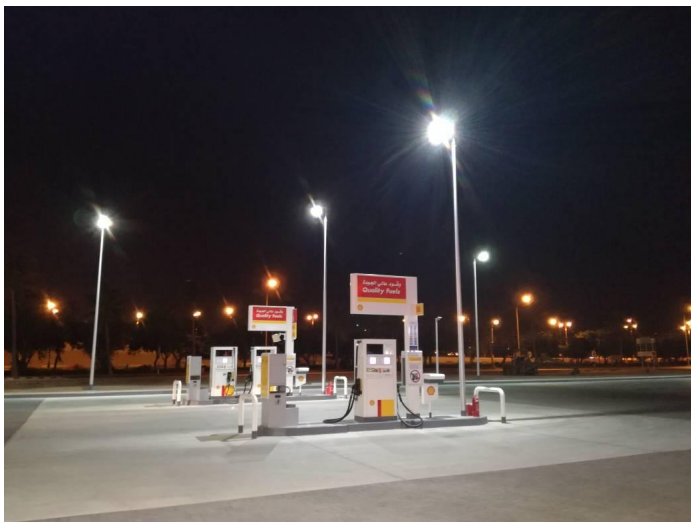
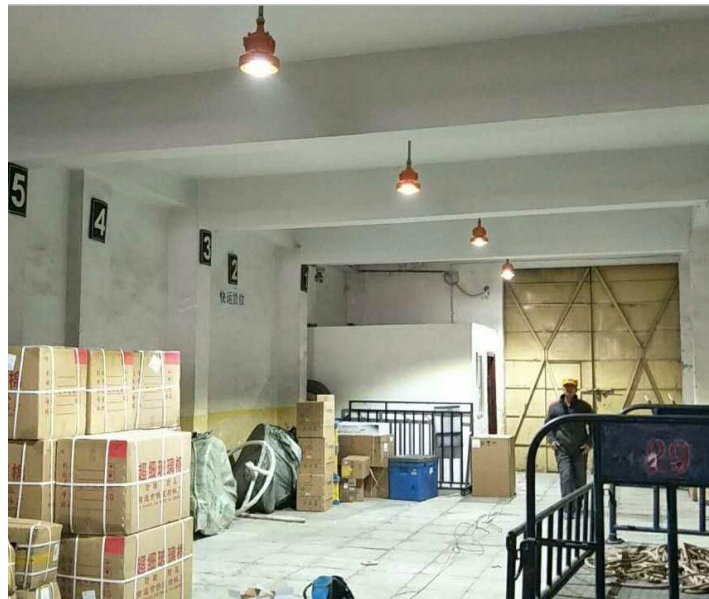


1. Description

- + Item name: LED explosion proof light
- + Model No: MF01
- + Housing Material : Die-casting Aluminum ,Grey color , Black, white, yellow
- + --Excellent Heat Sinking Design;
- + --Proprietary housing design for best thermal management & lumen maintenance;
- + Light source : bridgelux, citizen chip & moso, meanwell, led driver
- + Installation fixture:
- + Warranty :5years
- + Energy saving& Environmental Friendly
- + Long lifetime& high Luminous efficiency

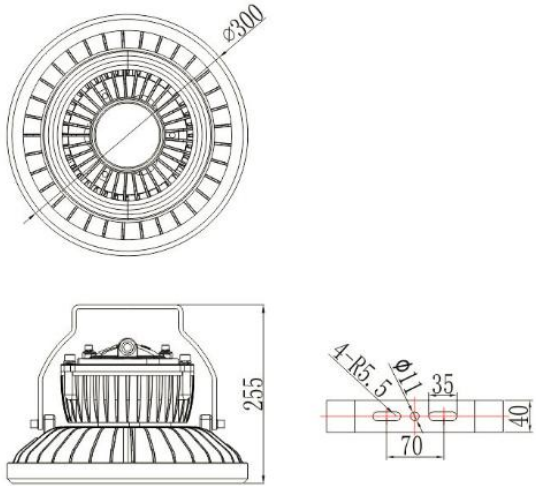
2. Applications

Applicable to warehouse , workshops , chemical industry ,military establishments , gas station , oil industry and the hazardous places where has inflammable and explosive materials.

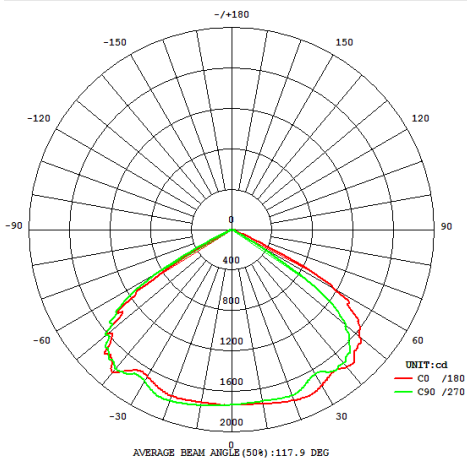
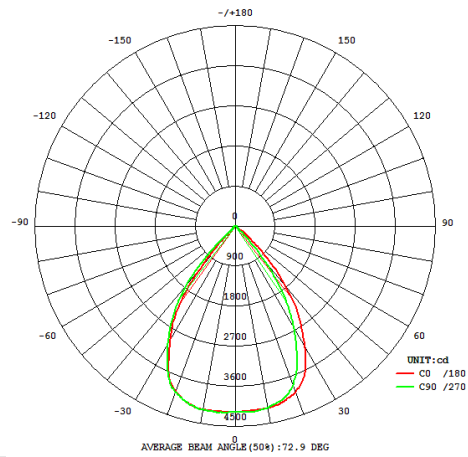
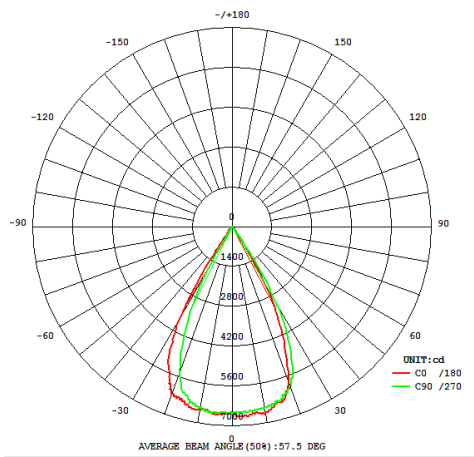


3. Drawing & size

50w-120w



Light Distribution



4. Main parameter

Description		MF01
Led power		100W
Citizen chip	Luminous Flux (LM)	13000LM
	Luminous efficiency (LM/W)	130lm/w
Color temperature(K)		5000k
Driver power consumption(W)		5W
Input Voltage /Frequency		100-240V (certified) and120-277V AC(workable)/50-60HZ
Rated Power factor		>0.95
Cable Entries		G3/4"
Luminaire Dimensions(mm)		300*300*250mm
Packing Dimensions(mm)		35.5*35.5*25
Net weight/Gross weight(KG)		6.5/7.4
Ambient Temperature		-35℃~50℃ (Ta in free air)
Standard compliance		EN60598,EN62493,EN62471,EN62031,EN55015,EN61547,EN61000 IEC60079
Environment		ROHS
Waterproof Grade		IP67
Lifetime(h)		50000h Ta=30℃

4. Product showing



5. Installation guide

